

Meeting:	Safer Bromley Partnership Strategic Group
Date:	30 June 2011
Subject:	Performance Targets 2011/2012
Author:	Colin Newman, Head of Community Safety colin.newman@bromley.gov.uk

1 SUMMARY

- 1.1 This report outlines proposals for a streamlined performance monitoring regime for the year 2011/2012 and beyond. It sets out progress in the reduction of crime, disorder and anti-social behaviour over the past five years, outlines issues with the previous the performance monitoring regime and proposes a more focused approach for 2011/2012.

2 RECOMMENDATION

- 2.1 The Strategic Group is asked to

- Reflect on the five year crime trends included within this report, demonstrating sustained reduction in key areas of crime and disorder.
- Note issues experienced with the previous performance monitoring regime and endorse the proposals that the performance monitoring regime for 2011/2012 focus on delivery of four key performance issues.
- Agree to receive a further report at the next meeting relating to measurement of reductions in Anti-Social Behaviour.
- Discuss and agree a proposed way forward in the measurement of public confidence and reassurance (feelings of safety).

3 BACKGROUND INFORMATION

- 3.1 The end of the performance year at March 2011 represented the final year of Bromley's three year community safety strategy. The strategy was formulated prior to removal of the statutory requirement to undertake a three year crime audit and to agree a three year strategy. This requirement has been replaced by the current process of undertaking an annual Strategic Assessment (incorporating Control Strategy Priorities and Intelligence Requirements) and a six monthly review.
- 3.2 As noted under Item 4 on the Agenda, the majority of targets that were monitored during the period were achieved. In the final year of the Strategy 2010/2011, a reduction of 7.4% in Total Notifiable Offences (a reduction of 1,766 on the previous year).

3.3 Whilst the progress against agreed targets has been both positive and encouraging, the most recent regime is no longer regarded as fit for purpose. The previous regime involved establishing targets against 34 separate indicators, these representing a combination of Nationally imposed indicators, those negotiated with the Government Office for London and those agreed at a local level to reflect priorities. Many of the National Indicators were never developed (e.g. NI36 protection against terrorist attack) and, the election of a new Government in May 2010 saw the deletion of the vast majority of National Indicators. Of particular note is the deletion of the “Place Survey” and, as such, any means of measuring the proportion of residents who state that they feel Bromley is a safe place to live.

3.4 In light of these changes, it is proposed that a new performance monitoring regime is required in order to assess the impact of the Partnership in its objective of making Bromley a Safer place. At the previous meeting of the Partnership, the following Control Strategy Priorities were agreed:

- Crimes against Property
- Violence against Person
- Anti-Social Behaviour
- Public Confidence

3.5 These priorities are reflected in the performance framework established by the Metropolitan Police and, as such, it is proposed that these four indicators form the basis of the future performance management regime for the Safer Bromley Partnership. In relation to the first two priorities, it proposed that targets be set against the indicators of reducing Violent Crime and reducing Property Crime. A summary of the “portfolio” of offences that are included within these overarching targets are provided at Appendix 1. If members are in agreement with the proposal, only the following four targets would be reported on at each meeting of the Strategic Group:

Performance Indicator 1 Reduction in number of violent crimes within Bromley

Performance Indicator 2 Reduction in number of property crimes within Bromley

Performance Indicator 3 Reduction in levels of recorded Anti Social Behaviour

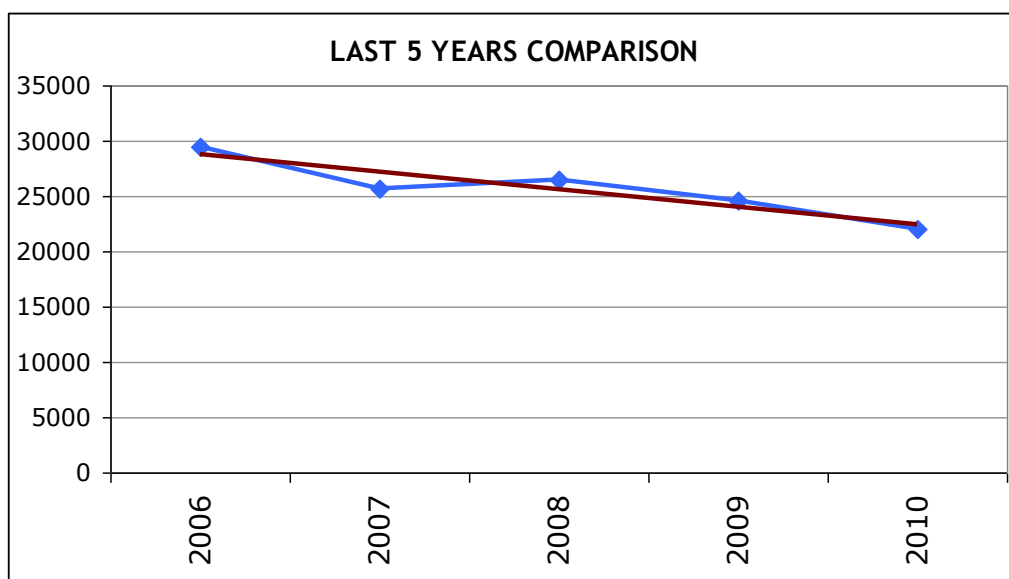
Performance Indicator4 Increased confidence in the fact that Bromley is a safe place

Reporting on individual crime types and detail of individual operations would only be made as a routine if achievement against set targets was not being made or, in some cases, where the measurable rates of individual offences or types of offending were significantly different from expected trends and predicted patterns etc. The management of these operational level issues would be dealt with outside of the Strategic Group at the combined Police/Partnership Tactical Tasking and Coordination Group chaired by the borough Superintendent.

Setting Targets for 2011/2012

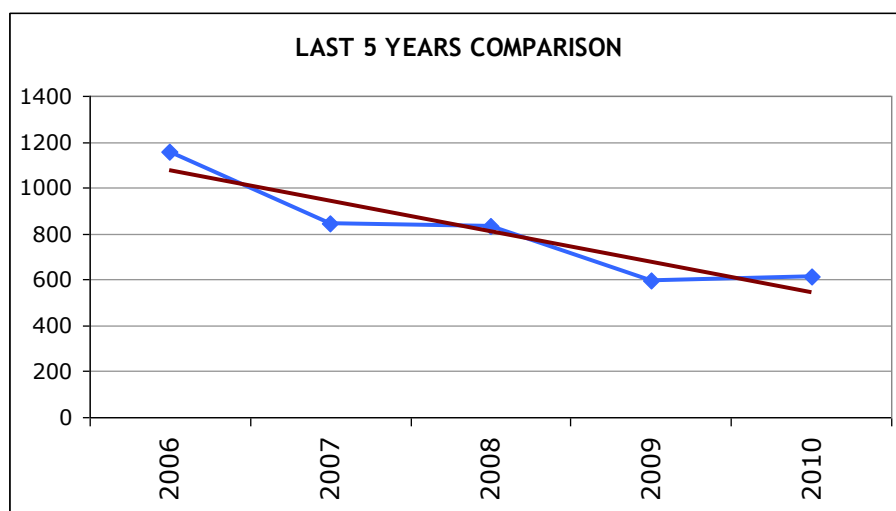
3.6 As already noted elsewhere in this report, significant progress has been made in relation to reducing crime and disorder in Bromley. This is reflected not only in the previous year's performance figures but also over the previous five years and the following charts provide an indication of the downward trends in crime in Bromley over the past five years (January 2006 – December 2010):

Figure 1 – Total Notifiable Offences



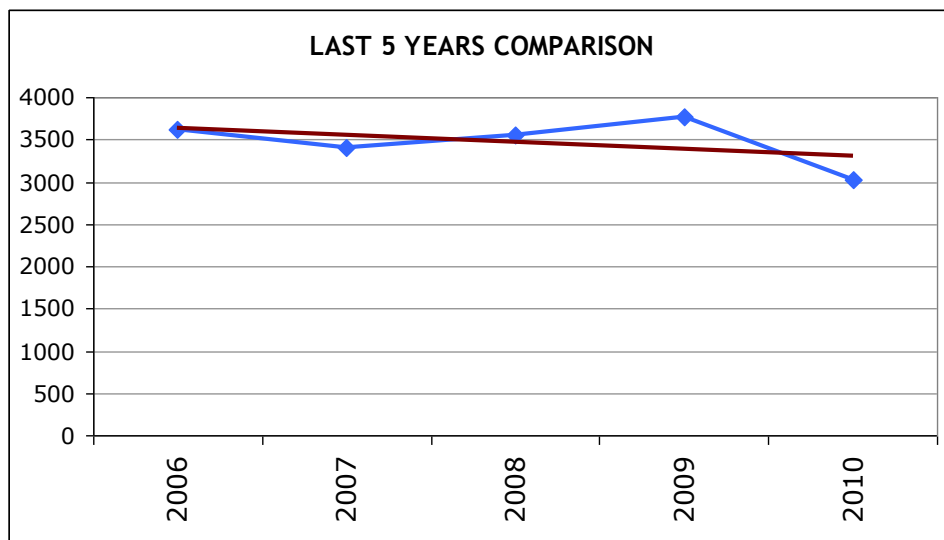
3.7 As can be seen from the figure above, the consistent trend over the past five years in relation to the number of Total Notifiable Offences has been a decline in numbers. This consistent reduction in levels of offending over the previous five years is reflected in a wide range of different crime types, as indicated by the figures below:

Figure 2 - Robbery



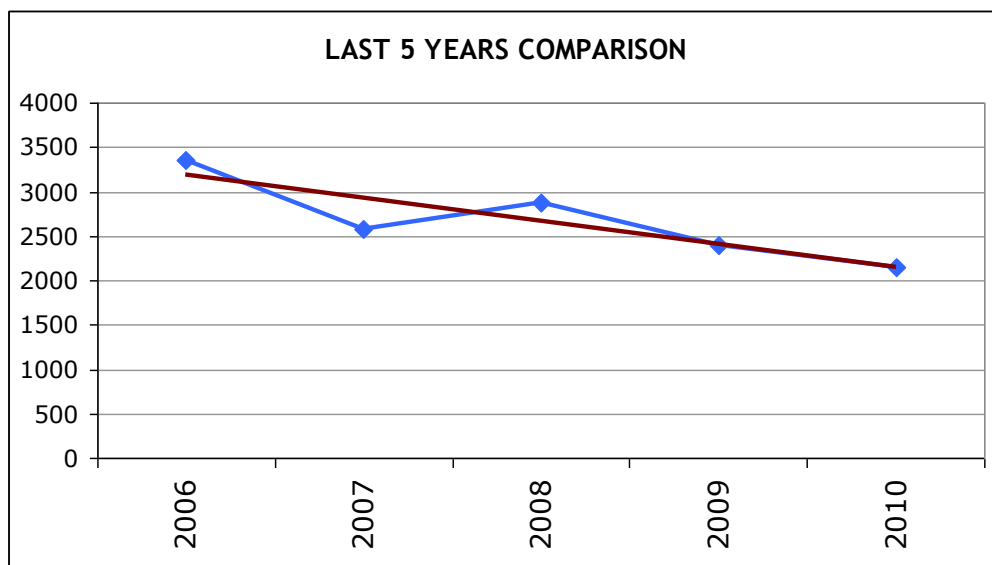
3.8 Robbery represents 2.8% of Total Notifiable Offences in the five year period and the trend over that period is a decline in the number of offences..

Figure 3 - Burglary



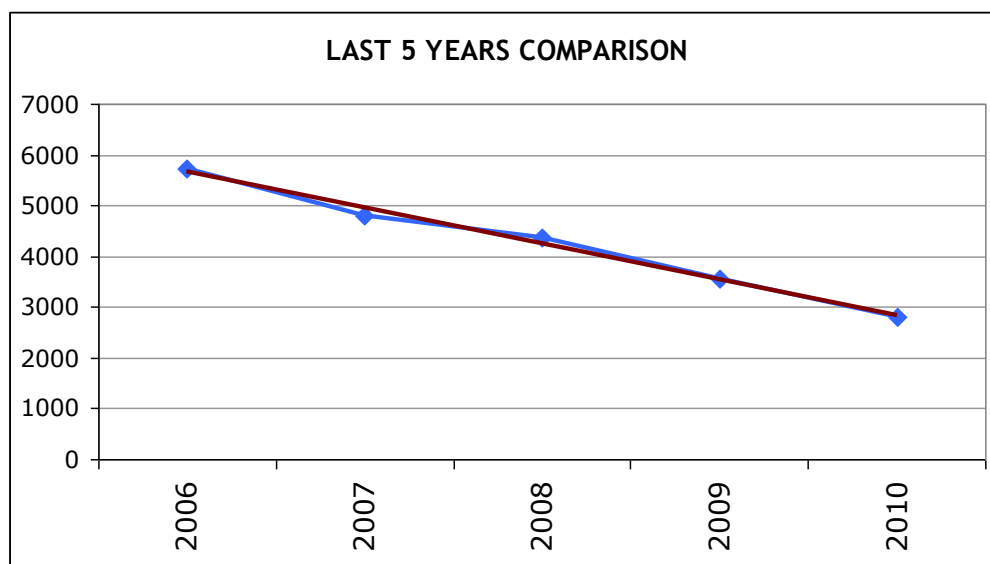
3.9 Offences of Burglary represent 13.8% of the Total Notifiable Offences in the period and, whilst the trend does not indicate as marked a reduction over the period, it does still indicate a reducing level of offences.

Figure 4 – Theft From Motor Vehicle



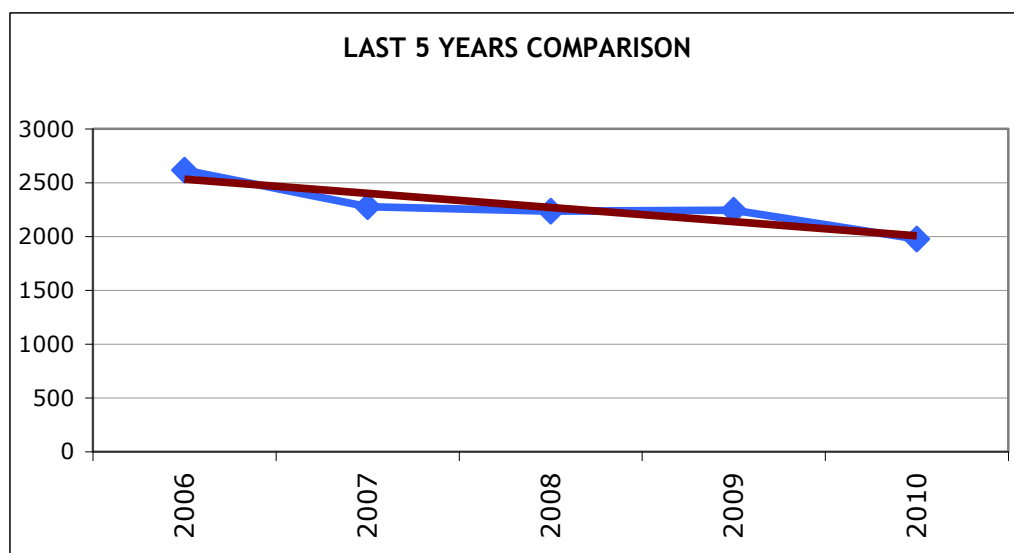
3.10 Theft from Motor Vehicle accounts for 9.8% of Total Notifiable Offences and the five year trend shows a steady decline in numbers of offences.

Figure 5 – Criminal Damage



3.11 Criminal Damage represents 12.8% of Total Notifiable Offences and the five year trend shows a reduction in levels of this crime..

Figure 6: Total Assaults



3.12 Total Assaults (comprising offences of Most Serious Violence and Assault With Injury) account for 9% of the Total Notifiable Offences and also demonstrates a declining trend over the previous five years.

- 3.13 Against a background of these trends, it must be acknowledged that continuing to decrease levels of crime and disorder at the rates previously experienced is difficult to sustain. As such, it is proposed that the Partnership set a relatively modest reduction target in relation to Violent Offences (proposed reduction target is 2%) and Property Offences (proposed reduction target is 1%).
- 3.13 Anti-Social Behaviour – At a London wide level, the work in relation to Anti-Social Behaviour will focus on establishing a baseline for future reduction targets. In Bromley, it is proposed that a more detailed report be presented to the next meeting of the Partnership with an outline of how the Partnership intends to measure levels of Anti-Social Behaviour and ensure progress in making Bromley safer.
- 3.14 Public Confidence/ Feeling Safe – In the past, the “Place Survey” included a suite of questions to members of the public who participated in the survey which related to their feelings of safety and assessment of whether certain behaviours were problematic (drug dealing, drinking, loud and aggressive behaviour etc). In addition, Police public satisfaction surveys have routinely included a question asking respondents to rate how they perceive the Police and Council to be performing. The “Place Survey” has been deleted and there is no proposed replacement at this time. In addition there are no current resources allocated in order to replicate a localised version of such a survey of the views of the public in Bromley. One option would be to rely on the questions asked by the Metropolitan Police Service in relation to satisfaction with Police and Council but this measure only relates to two members of the Partnership and there is a very real possibility that the answers received to that question are influenced by the agency asking them.
- 3.15 The Partnership are asked to consider which options are preferred in relation to measuring levels of public confidence and feelings of safety within the borough.

APPENDIX 1

Performance Indicator Portfolios:

Violence Portfolio	
Offences	Supporting Measures
Violence with Injury	Domestic Violence
Common Assault	Domestic Violence Sanction Detection Rate
Harassment	Domestic Violence Arrest Rate
Threats/ Conspiracy to Kill	Serious Youth Violence
Blackmail	Knife Enabled Crime
Kidnapping/ False Imprisonment	Knife Enabled Crime Sanctioned Det. Rate
	Gun Crime
	Gun Crime Sanctioned Det. Rate
	Most Serious Violence
	Most Serious Violence Sanctioned Det. Rate

Property Portfolio
Offences:
Personal Robbery
Commercial Robbery
Total Robbery
Residential Burglary
Non-Residential Burglary
Theft/Taking Motor Vehicles
Theft From Motor Vehicles
Theft From Shops
Theft From Person
Theft of Pedal Cycles
Other Theft
Criminal Damage